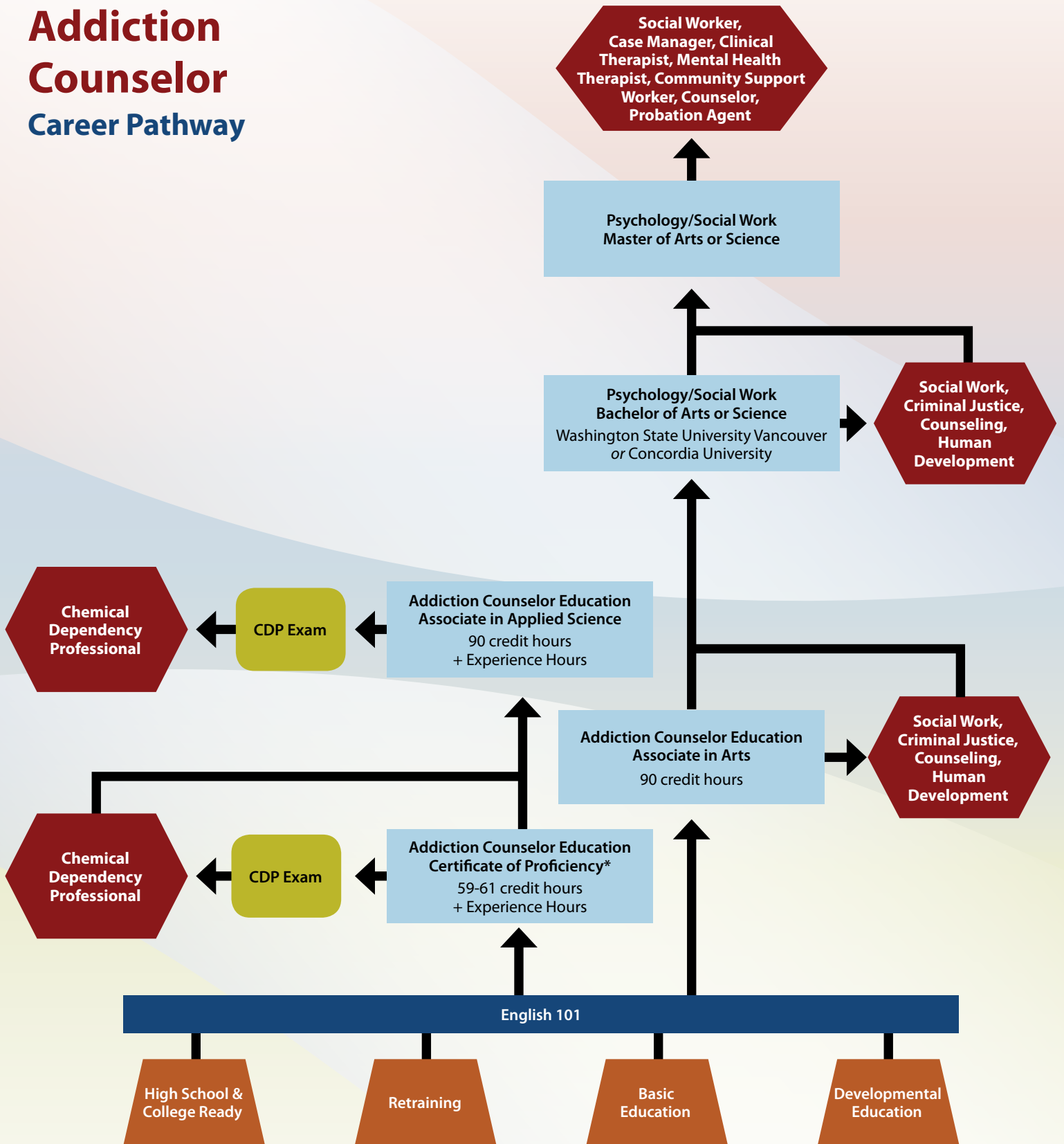


Clark College Addiction Counselor Career Pathway



To find out more, contact advising: (360) 992-2345. Or visit: www.clark.edu/academics/programs/aced

NOTE: In order to obtain experience hours you must pass a background check.
Experience hours can be obtained while completing degree courses.

*This certificate is intended for those students already holding an associate degree or above.

Alternate format of this document is available upon request. Please contact Disability Support Services at (360) 992-2314 or (360) 992-0901 Video Phone.

KEY: = entry points = degrees and certificates = certifications = job titles = foundation requirements