

Japanese garden to grace Clark College

Anonymous donor offers to pay up to \$1 million to build and maintain facility

By **HOWARD BUCK**
Columbian staff writer

When an anonymous donor approached the city of Vancouver about paying to construct and maintain a Japanese garden, a suitable site quickly came to mind.

Clark College, already home to nearly 100 Japanese flowering cherry trees that paint the campus a precious pink each spring, will gladly accept the gift.

Clark has sought campus and community feedback on a conceptual design of a tranquil oasis of rock, sculpture and greenery.

The garden would be folded onto the campus "quad" behind the O'Connell Sports Center and Music Building, and blend into one row of cherry trees.

The comment period ends Monday.

The donor has pledged up to \$1 million for design, construction and future maintenance of the garden.

That commitment eased worries that Clark not take on new maintenance costs while facing dramatic budget cuts, due to a ballooning state budget shortfall this winter.

The garden is not expected to include any large water feature that could drive up

On the Web:

To see conceptual designs and to comment on the garden plans:

www.clark.edu/special/japanese_garden/index.php

costs.

Clark President Bob Knight welcomes the addition.

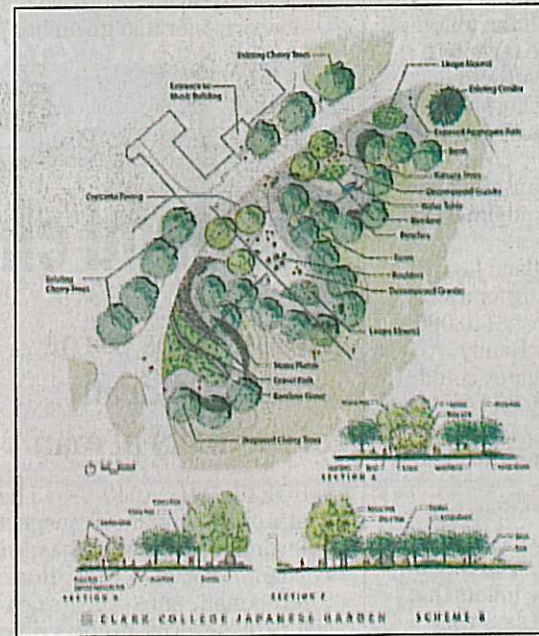
The garden is a near-perfect match for the two long rows of Shirofugen cherry trees planted

in 1990. The trees were donated by John Kageyama, then president of America Kotobuki, to celebrate Washington state's centennial the year before.

"Our predecessors had the vision to embrace that gift and we are all the beneficiaries of that legacy," Knight said in written statement.

"We now have the chance, during our

GARDEN, Page C5



One of two conceptual designs for a new Clark College Japanese garden.

Murase Associates

Garden:

From Page C1

75th anniversary year, to do the same for the generations that follow us," Knight said.

Landscape architectural firm Murase Associates, which helped develop Propstra Square in Vancouver's downtown Esther Short Park, is handling the park's conceptual design phase.

The garden planning is be-

ing handled by the city, Clark College and the Parks Foundation of Vancouver-Clark County.

"We are very excited for the opportunity to have a cultural garden in the heart of our city," Vancouver Mayor Royce Pollard said in a written statement.

"This will be a unique and beautiful addition to our community."

HOWARD BUCK: 360-735-4515,
howard.buck@columbian.com.