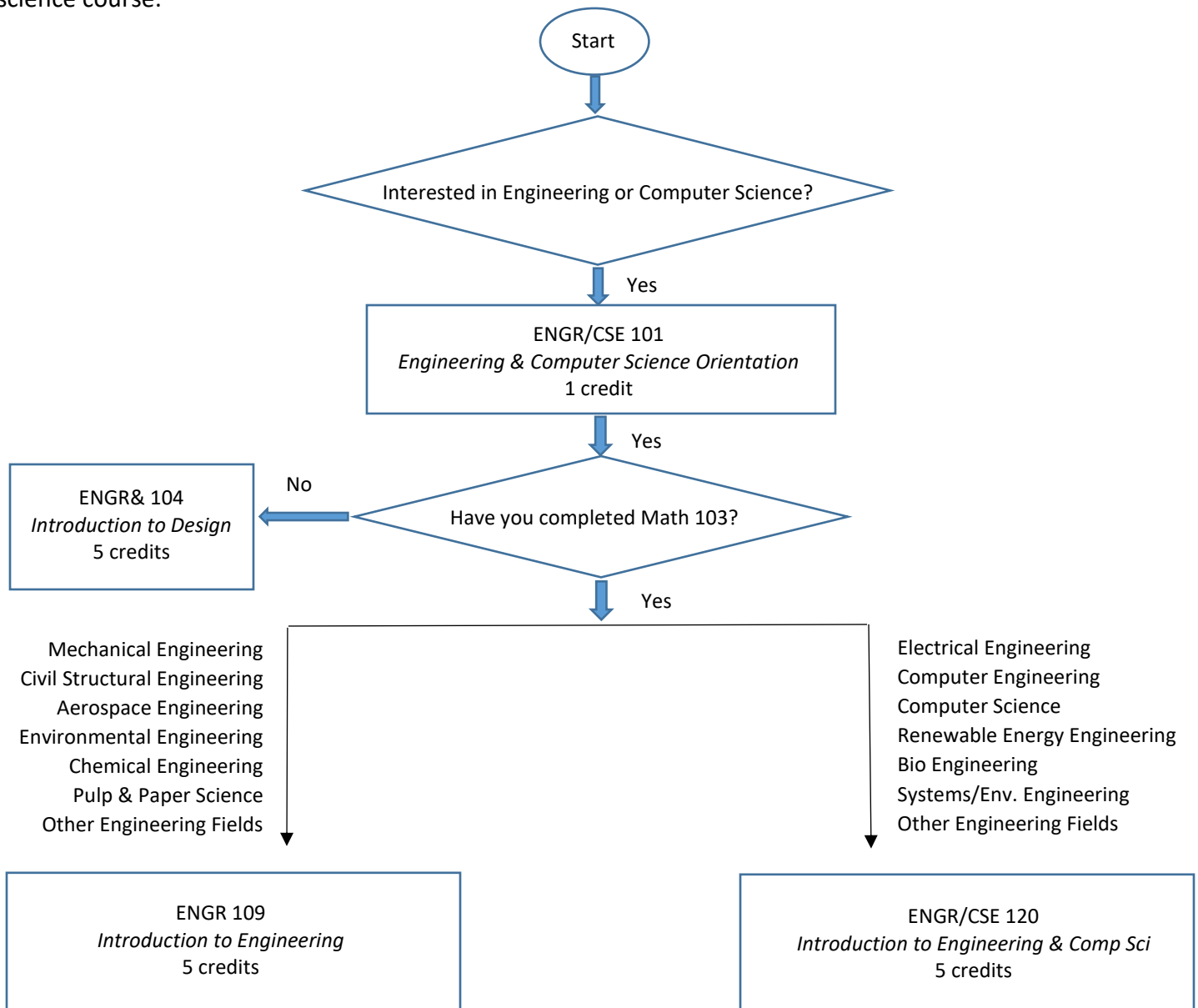




Engineering & Computer Science

Entry Guide

Clark College Engineering and Computer Science Department offers a number of orientation and introductory courses. These courses are designed to help students explore their educational options for successful career in Engineering and Computer Science. The following flow chart is a guide to your first engineering and computer science course:



Prof. Tina Barsotti or **Prof. Carol Hsu**
360-992-2354 360-992-2452
cbarsotti@clark.edu chsu@clark.edu
Office: Clark College SBG 105 & 103

Prof. Izad Khormae or **Prof. Nick Macias**
360-992-2383 360-992-2115
ikhormae@clark.edu nmacias@clark.edu
Office: Clark College SBG 119 & 115

Students are encouraged to meet with an Engineering and Computer Science advisor **as soon as possible** in order to develop an educational plan. To view our engineering and computer science advisor schedule, please visit www.EngrCS.com/schedule.