

Jazz Band Auditions 2024-25

New times at Clark College in the Jazz Department...we are starting a second jazz band!! I'm very excited about the growth we are experiencing and happy you are choosing to join in on the journey.

Auditions will occur during the first week of fall quarter classes. Everyone will meet in the bandroom at 2:00 on Monday, September 23rd to discuss the auditions and to talk about the year ahead.

Jazz I will take 5 saxes, 5 trumpets, 5 trombones and rhythm (guitar, piano, bass, drums). We might take an additional drummer and/or bass player, depending on overall numbers of people auditioning and skill level. Drummers: I would highly recommend you work on your basic conga "chops;" we will be playing a lot of salsa/son montuno as well as other cuban styles. For those auditioning on bass, you might want to consider working on some conga as well...the more you can bring to the audition, the better for you!

For **Jazz II**, I am open to having extra members (7 saxes, 2 pianos for example) if the skill level is there. That being said, I will **not** go to the extremes of 10 saxes, 8 trombones, etc. In my opinion, big band is a chamber ensemble (one on a part) and the further we get from that, everyone misses out on the experience.

Please note: this is an open audition. If you played in the band last year (2023-24), **you are not guaranteed a seat in Jazz I.**

Saxophones – audition in the instrument you are most comfortable on. My goal will be to choose the 5 best auditions, regardless of instrument. You will have the opportunity to tell me your preference of instruments.

Trumpets – everyone needs to prepare the "trumpet" audition. If you are interested in being considered for lead trumpet, you will do that audition ***in addition to the "trumpet" audition.*** So, if you are wanting to be considered for the lead trumpet chair, you will need to prepare **both** audition pieces.

Trombones – everyone needs to prepare the "trombone" audition. If you are interested in auditioning for bass trombone, you will do that audition ***in addition to the "trombone" audition.*** So, if you are wanting to be considered for the lead trumpet chair, you will need to prepare **both** audition pieces.

Rhythm section – rhythm section will be a group audition. Everyone will prepare both pieces. On Wednesday, September 25th, at 2:00, we will have all rhythm players audition together. We will put together a section, play

through a piece, switch out some players and try it again. Then the same procedure for the other tune. The goal is to get the section that works the best together.

Soloists (optional): Nobody has to improvise on their audition. That being said, the more you bring to the audition (ability to improvise, for instance), the more you have to offer the ensemble. After your prepared piece, be ready to play two choruses of medium blues in F, as well as the head and two choruses of *Jeannine*, by Duke Pearson, in Ab concert.. I will supply the backing tracks at the audition.

If you have any questions about the audition procedure, please email me at daharris@clark.edu.

Thanks, and good luck! See you September 23rd.

2

(17)

SOLO (IF NO GUITAR)

 $\text{♩} = 176$

20

24

(25)

Gm7

C9

Am7(b5)

D7(b9)

Gm7

C9

28

Eb7

D7(#9)

Gm7

30

Am7(b5)

D7(b9)

Gm7

C9

Am7(b5)

(33)

Gm7

C9

Am7(b5)

D7(b9)

Gm7

36 Eb7 D7(#9) Gm Am7(b5) D7(b9)

39 Gm Eb7 D7(#9)

(41) Cm D7(b9) Gm

44 Eb9 Am7(b5)/C C#0

47 Am7(b5) (49)

2

51-52

2

4

53

A handwritten musical score for the song "The Rose Tree". The score is written on two staves, a treble staff and a bass staff, both in G major (one sharp) and 2/4 time. The melody is written in the treble staff, and the accompaniment is in the bass staff. The piece consists of two measures. The first measure features a melody starting on G4, moving up to A4, B4, and C5, then down to B4, A4, and G4. The second measure continues the melody with G4, F#4, E4, and D4. The bass staff provides a simple accompaniment with a steady quarter-note pulse. The piece ends with a double bar line.

55

SOLO (PLAY ONLY IF NO GUITAR)

Musical score for 'Solo (Pent Only) (HND Guitar)'. The score is written for guitar in E-flat major (three flats) and 4/4 time. It consists of three measures. The first measure features a melody starting on F4, moving to G4, A4, Bb4, and C5, with a fermata over the last two notes. The second measure continues the melody with G4, F4, E4, and D4, with a fermata over the last two notes. The third measure returns to the melody starting on F4, moving to G4, A4, Bb4, and C5, with a fermata over the last two notes. The bass line is mostly silent, with a few notes in the first measure.

58

A handwritten musical score for the song 'The Rose Tree'. The score is written on three systems of five-line staves. The first system has a treble clef and a key signature of two flats (B-flat and E-flat). The melody is written in the treble staff, and the bass staff contains a single whole note chord. The second system continues the melody in the treble staff, with the bass staff again containing a single whole note chord. The third system concludes the piece with a final melody line in the treble staff and a whole note chord in the bass staff. The notation includes various note values (quarter, eighth, and sixteenth notes), rests, and accidentals (sharps and flats). The handwriting is in black ink on white paper.

61

(63)

 $G_m^9 \quad C^9$

Am7(b5)

D7(b9)

 G_m

٢٩

A musical score for the song 'The Rose Tree'. The score is written for voice and piano. The voice part is in the treble clef, and the piano accompaniment is in the bass clef. The key signature has two flats (B-flat and E-flat), and the time signature is 4/4. The piano part features a prominent bass line with chords and a melody in the right hand. The lyrics are written below the voice staff.

mf

The Rose Tree
The Rose Tree
The Rose Tree
The Rose Tree

E67

D7(#9)

 G_m^9

C9

Am7(b5)

D7(b9)

A musical score for the song "The Rose Tree". The score is written for piano (p) and features a treble and bass clef. The key signature is one flat (B-flat). The melody is in the treble clef, and the accompaniment is in the bass clef. The score includes a key signature change to two flats (B-flat and E-flat) in the final measure. The lyrics "The Rose Tree" are written below the melody. The score is marked with a piano (p) dynamic and includes a key signature change to two flats (B-flat and E-flat) in the final measure.

THE HEAT'S ON

PIANO

3

53 C_{MI}^9 54 F^{13} 55 $B^b_{MA}^7$ 56

START 57 $B^b_{MI}^9$ 58 E^b^9 59 A^b 60

TENOR JAZZ

61 A_{MI}^7 62 D^9 63 G 64

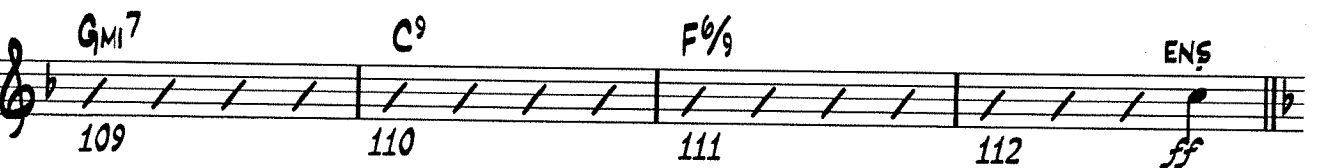
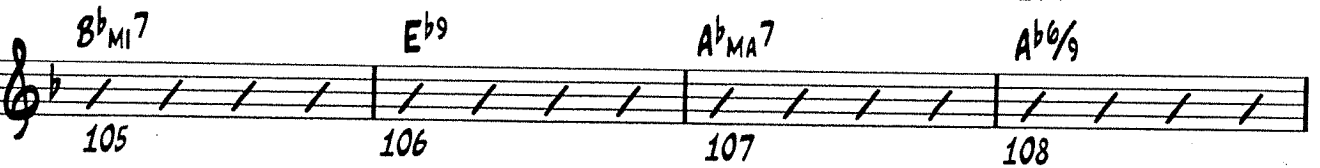
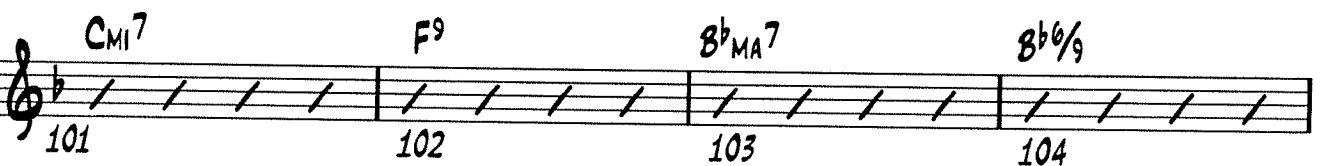
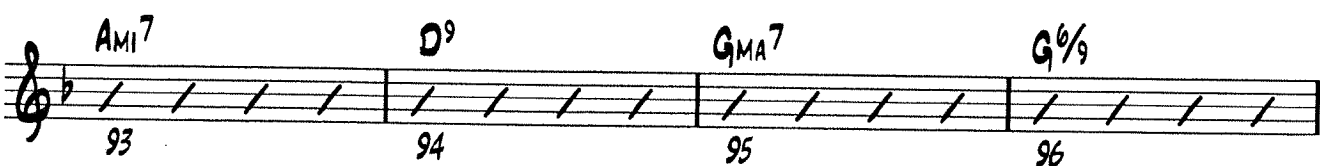
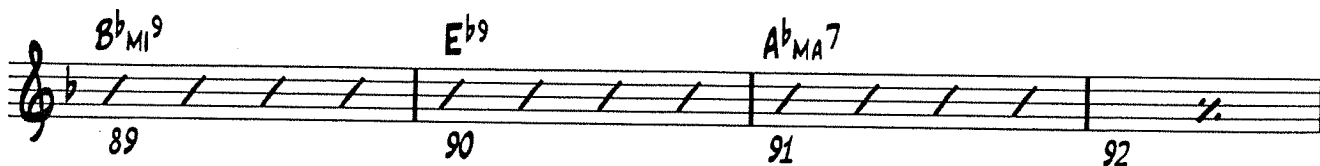
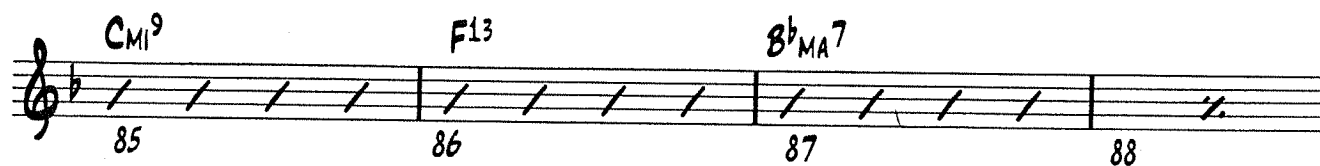
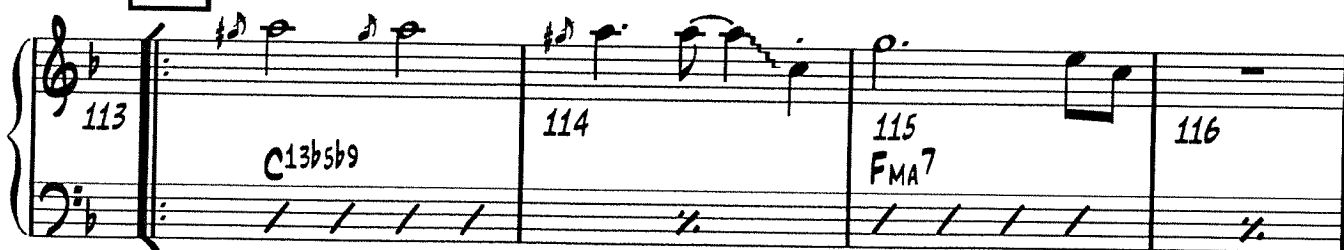
65 G_{MI}^7 66 C^9 67 F_{MA}^7 68

69 C_{MI}^7 70 F^9 71 B^b 72

73 $B^b_{MI}^7$ 74 E^b^9 75 A^b 76

77 G_{MI}^7 78 C^9 79 F^9 80

81 G_{MI}^7 82 C^9 83 F_{MA}^7 84

**113**

THE HEAT'S ON

PIANO

5

117 C_{MI}^9 118 F^{13} 119 $B^b_{MA}7$ 120 $B^b\frac{6}{9}$

1. 121 $B^b_{MI}^9$ 122 E^b13 123 $A^b\frac{6}{9}$ 124

125 F_{MI}/D 126 $G7^b5b9$ 127 $G_{MI}7/C$ 128 (TRPTS)

2. 129 $B^b_{MI}^9$ 130 E^b13 131 G^b9 $F\frac{6}{9}$ E^b9

132 D^9 133 $G_{MI}7$ 134 $G_{MI}7$ F

3

ORCH

135

138

$D7^b5b9$

139

140

141

142

D^b9

G^9

SOLO

143

144

145

146

147