

## Jazz Band Auditions 2024-25

New times at Clark College in the Jazz Department...we are starting a second jazz band!! I'm very excited about the growth we are experiencing and happy you are choosing to join in on the journey.

Auditions will occur during the first week of fall quarter classes. Everyone will meet in the bandroom at 2:00 on Monday, September 23<sup>rd</sup> to discuss the auditions and to talk about the year ahead.

**Jazz I** will take 5 saxes, 5 trumpets, 5 trombones and rhythm (guitar, piano, bass, drums). We might take an additional drummer and/or bass player, depending on overall numbers of people auditioning and skill level. Drummers: I would highly recommend you work on your basic conga "chops;" we will be playing a lot of salsa/son montuno as well as other cuban styles. For those auditioning on bass, you might want to consider working on some conga as well...the more you can bring to the audition, the better for you!

For **Jazz II**, I am open to having extra members (7 saxes, 2 pianos for example) if the skill level is there. That being said, I will **not** go to the extremes of 10 saxes, 8 trombones, etc. In my opinion, big band is a chamber ensemble (one on a part) and the further we get from that, everyone misses out on the experience.

Please note: this is an open audition. If you played in the band last year (2023-24), **you are not guaranteed a seat in Jazz I.**

**Saxophones** – audition in the instrument you are most comfortable on. My goal will be to choose the 5 best auditions, regardless of instrument. You will have the opportunity to tell me your preference of instruments.

**Trumpets** – everyone needs to prepare the "trumpet" audition. If you are interested in being considered for lead trumpet, you will do that audition ***in addition to the "trumpet" audition.*** So, if you are wanting to be considered for the lead trumpet chair, you will need to prepare **both** audition pieces.

**Trombones** – everyone needs to prepare the "trombone" audition. If you are interested in auditioning for bass trombone, you will do that audition ***in addition to the "trombone" audition.*** So, if you are wanting to be considered for the lead trumpet chair, you will need to prepare **both** audition pieces.

**Rhythm section** – rhythm section will be a group audition. Everyone will prepare both pieces. On Wednesday, September 25<sup>th</sup>, at 2:00, we will have all rhythm players audition together. We will put together a section, play

through a piece, switch out some players and try it again. Then the same procedure for the other tune. The goal is to get the section that works the best together.

**Soloists (optional):** Nobody has to improvise on their audition. That being said, the more you bring to the audition (ability to improvise, for instance), the more you have to offer the ensemble. After your prepared piece, be ready to play two choruses of medium blues in F, as well as the head and two choruses of *Jeannine*, by Duke Pearson, in Ab concert.. I will supply the backing tracks at the audition.

If you have any questions about the audition procedure, please email me at [daharris@clark.edu](mailto:daharris@clark.edu).

Thanks, and good luck! See you September 23<sup>rd</sup>.

DRUM SET

# ARDIENTE

COPYRIGHT © 2020. COMPLIMENTARY FOR CLARK COLLEGE, WA, ONLY; DO NOT DISTRIBUTE.  
SAMPLE MP3 AT [WWW.MICHELE-FERNANDEZ.COM](http://WWW.MICHELE-FERNANDEZ.COM)

COMP. AND ARR. BY MICHELE FERNÁNDEZ

$\text{♩} = 80$  15  $\text{♩} = 172$   
SALSA

*Shell* 1-15

(17) 2/3 RH "CASCARA" PATTERN (HI HAT) 2 2

*mf* 2/3 CLAVE (HH) NO BD

23 2 FILL (25) 2/3 RH "CASCARA" PATTERN (HI HAT OR FT SHELL) *Shell*

27 2 2

(33) 2/3 RH "CASCARA" PATTERN (RIDE) 2 2

*mf*

39 (41) RH "CAMPANEO" PATTERN (C.B. OR RIDE BELL)

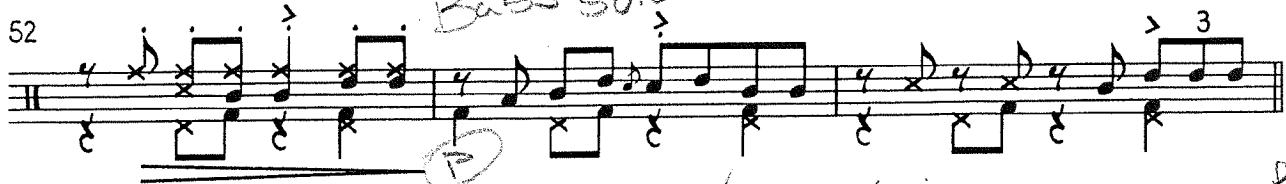
43 2 2 2

2

(49) TUTTI FILL



52



(55) 2/3 RH "CASCARA" PATTERN (HI HAT)



mf

H.H.: 2/3 CLAVE; NO BD

ride

(63)

2/3 RH "CASCARA" (HI HAT OR FT SHELL)



mf

(71) RH "CAMPANEO" PATTERN (C.B. OR RIDE BELL)



73



(79)

Congo



mf

80-82

(87)

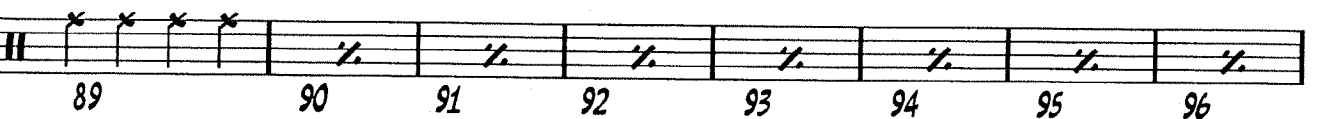
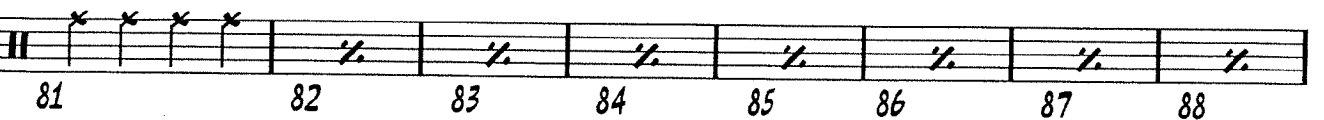
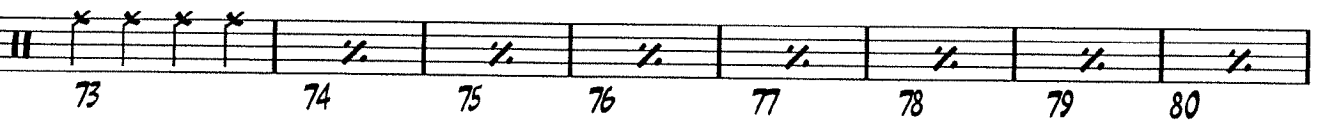
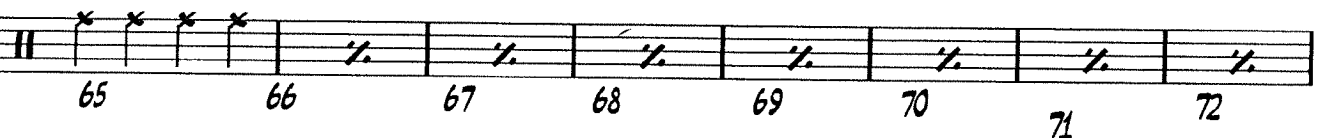
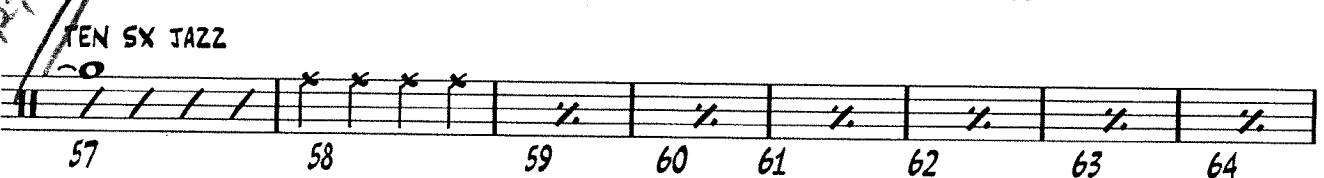
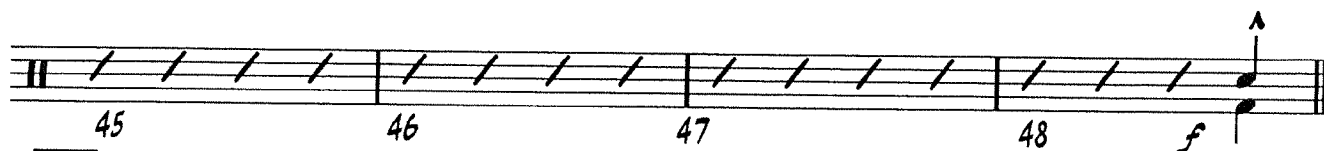
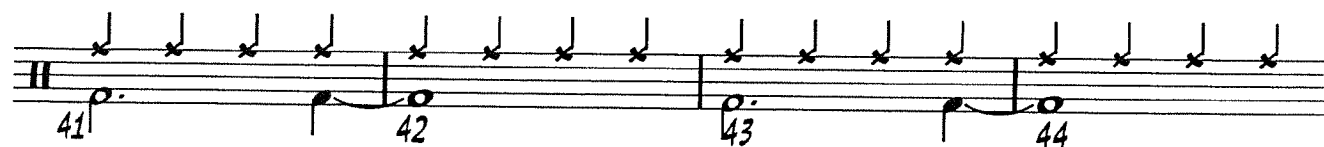
RH "CAMPANEO" (C.B. OR RIDE BELL)



86

ff

mf



Drum score for 'The Heat's On', measures 97 to 137.

Measures 97-104: Snare drum pattern (x x x x) followed by a series of slashes representing a cymbal or tom pattern.

Measures 105-112: Snare drum pattern (x x x x) followed by a series of slashes. Measure 112 ends with a double bar line and the word **ENS** (Ensemble).

Measure 113: A boxed measure containing the number **113**, indicating a repeat or a specific drum pattern.

Measures 113-116: Snare drum pattern (x x x x) followed by a series of slashes. Measure 116 ends with a double bar line and the word **FILL**.

Measures 117-120: Snare drum pattern (x x x x) followed by a series of slashes.

Measures 121-124: Snare drum pattern (x x x x) followed by a series of slashes.

Measures 125-128: Snare drum pattern (x x x x) followed by a series of slashes. Measure 127 contains the word **(TRPTS)** (Trumpets).

Measures 129-132: Snare drum pattern (x x x x) followed by a series of slashes.

Measures 133-134: Snare drum pattern (x x x x) followed by a series of slashes.

Measures 135-137: A section labeled **SOLO** with a dashed line above the staff, indicating a solo drum pattern.

Drum notation for measures 138 through 147. The notation is written on three staves, each beginning with a double bar line and a key signature of one sharp (F#).

Measure 138: Quarter note, eighth note, quarter note, quarter note, quarter note, eighth note, quarter note, quarter note, quarter note, quarter note, quarter note, quarter note.

Measure 139: Quarter note, eighth note, quarter note, quarter note, quarter note, eighth note, quarter note, quarter note, quarter note, quarter note, quarter note, quarter note.

Measure 140: Quarter note, eighth note, quarter note, quarter note, quarter note, eighth note, quarter note, quarter note, quarter note, quarter note, quarter note, quarter note.

Measure 141: Quarter note, eighth note, quarter note, quarter note, quarter note, eighth note, quarter note, quarter note, quarter note, quarter note, quarter note, quarter note.

Measure 142: Quarter note, eighth note, quarter note, quarter note, quarter note, eighth note, quarter note, quarter note, quarter note, quarter note, quarter note, quarter note.

Measure 143: A whole note rest, labeled with a "2" above it, indicating a two-measure rest.

Measure 145: Quarter note, eighth note, quarter note, quarter note, quarter note, eighth note, quarter note, quarter note, quarter note, quarter note, quarter note, quarter note.

Measure 146: Quarter note, eighth note, quarter note, quarter note, quarter note, eighth note, quarter note, quarter note, quarter note, quarter note, quarter note, quarter note.

Measure 147: Quarter note, eighth note, quarter note, quarter note, quarter note, eighth note, quarter note, quarter note, quarter note, quarter note, quarter note, quarter note.

A "FILL" is indicated by a dashed line between measures 142 and 143.