

COMPLETION



FEBRUARY 2017

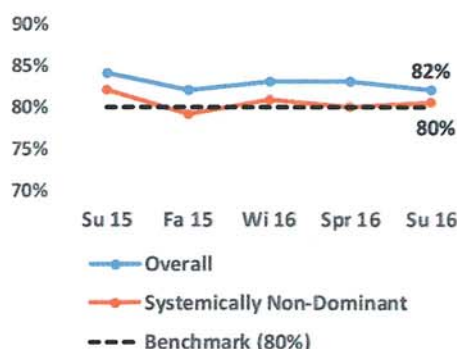
Clark College, in service to the community, guides individuals to achieve their educational and professional goals – including certificate and degree completion – by accomplishing its core theme objectives of academic excellence, social equity, economic vitality, and environmental integrity.

Degree or Certificate-Seeking Full-Time Student Completion Rate Within 3 Years

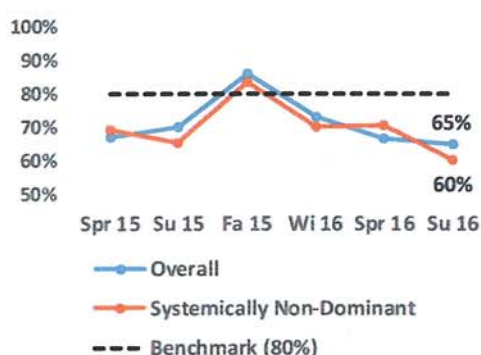


Fall 2009, Fall 2010, Fall 2011, Fall 2012, Fall 2013, Fall 2014, Fall 2015, Fall 2016, Fall 2017, Fall 2018, Fall 2019, Fall 2020, 2012-2013, 2013-2014, 2014-2015, 2015-2016, 2016-2017, 2017-2018, 2018-2019, 2019-2020, 2020-2021, 2021-2022, 2022-2023, 2023-2024

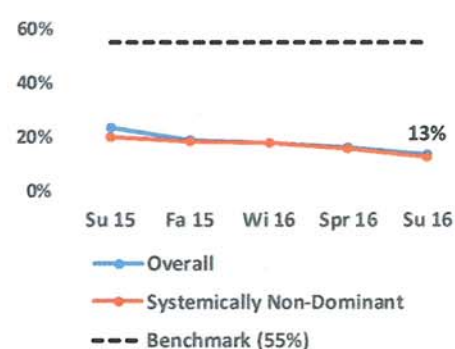
Course Success Rate: Certificate or Degree-Seeking Students



First-to-Second Quarter Retention: Certificate or Degree-Seeking Students



Transfer-Intent Students Completing College-Level Math Within First 4 Quarters Attended



Monthly Highlights

- Advising Services and Workforce Education Services teamed up to campaign for ReBoot Northwest, a funding initiative partnered through WorkSource, aimed at students enrolled in Information Technology or Advanced Manufacturing programs. The program also prioritizes funding for Veterans.
- The eLearning Systems team and Disability Support Services staff are working together this winter quarter to offer a pilot of Ally, a new accessibility tool in CANVAS. This tool will allow DSS to better assess the accessibility of course content and help ensure content is accessible for students. Ally should serve as a supplemental accessibility checker and help our commitment for accessibility.
- Overall, 85.2% of first quarter, degree-seeking students were retained from Fall 2016 to Winter 2017. Among non-Running Start students, 76.7% were retained to Winter 2017, compared to 93.7% of Running Start students.