

Stormwater

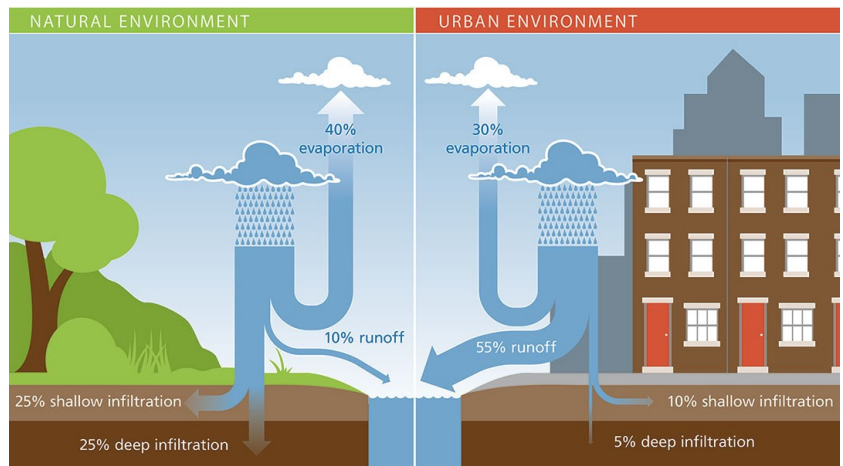
In the Pacific Northwest, water can appear to be an infinite resource. However, pollution, urbanization, and other population pressures threaten our remaining water supplies.

Stormwater is water that originates during [precipitation](#) events and snow/ice melt. Stormwater can soak into the soil (infiltrate), be held on the surface and evaporate, or runoff and end up in nearby streams, rivers, or other water bodies ([surface water](#)).

In natural landscapes such as forests, the soil absorbs much of the stormwater and plants help hold stormwater close to where it falls. In developed environments, unmanaged stormwater can create two major issues: one related to the volume and timing of runoff ([flooding](#)) and the other related to potential contaminants that the water is carrying, (water pollution).

How you can help

- [Grasscycling](#)
- [Natural Gardening](#)
- [Canines for Clean Water](#)
- [River-Friendly Car Washes](#)
- [Auto Care and Maintenance](#)
- [Erosion Control](#)
- [Pool and Spa](#)
- [Septic Sewer Maintenance](#)
- [Home Improvement](#)



Resources

[Environmental Protection Agency](#)

[Department of Ecology](#)

[Clark County](#)

[City of Vancouver](#)

[City of Portland](#)

Created By Kara Meredith

**Sustainable is Attainable:
Promote Green Education and Practices**