

From the Library of the Count Basie Orchestra

satin doll

By BILLY STRAYHORN,

DUKE ELLINGTON

and JOHNNY MERCER

Arranged by SAMMY NESTICO

DRUMS

MOD SWING PND. SOLO

The drum score is written on ten staves, each representing a measure of music. The notation includes various drum symbols, rests, and dynamic markings. Key section markers and measures are highlighted:

- Measures 1-11:** MOD SWING PND. SOLO. Measures 1-11 are marked with a slash and a vertical line, indicating a specific drum pattern or solo.
- Measure 12:** SXS. A circled measure number 12 is followed by the text "SXS".
- Measures 13-15:** Measures 13-15 are marked with a slash and a vertical line.
- Measures 16-19:** Measures 16-19 are marked with a slash and a vertical line.
- Measure 20:** BRASS. A circled measure number 20 is followed by the text "BRASS".
- Measures 21-24:** Measures 21-24 are marked with a slash and a vertical line.
- Measures 25-29:** Measures 25-29 are marked with a slash and a vertical line.
- Measures 30-34:** Measures 30-34 are marked with a slash and a vertical line.
- Measures 35-39:** Measures 35-39 are marked with a slash and a vertical line.
- Measures 40-44:** Measures 40-44 are marked with a slash and a vertical line.
- Measure 45:** TRPT JAZZ. A circled measure number 45 is followed by the text "TRPT JAZZ".

the Bill Holman Big Band Series

ST. THOMAS

As recorded on the "Bill Holman Band" CD (JVC)

Drums

Composed by Sonny Rollins
Arranged by Bill Holman

Quasi Calypso

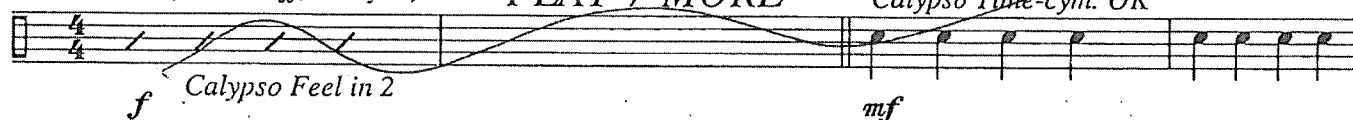
$\text{♩} = 100$

SOLO - (snare off, no cym.)

PLAY 7 MORE

9

Calypso Time - cym. OK



(little fill)
(4)

(little fill)
(8)



17

PLAY 6 MORE

25

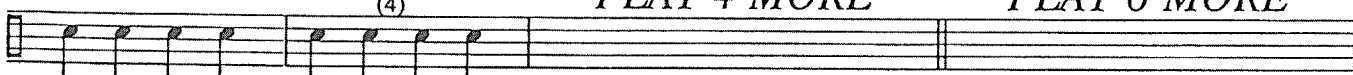
FILL



33

PLAY 4 MORE

PLAY 6 MORE

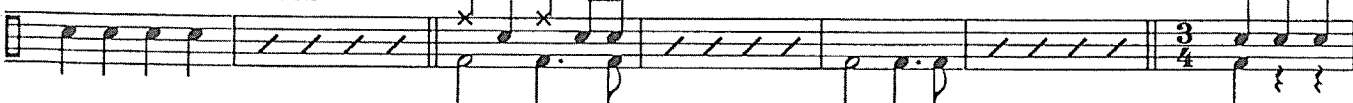


41

FILL

FILL

FILL



52

(Calypso)

(Solos)



60 68

PLAY 7 MORE PLAY 8 MORE PLAY 8 MORE

76 84

PLAY 7 MORE LEAD INTO SWING SWING in "4"

92

(4) PLAY 4 MORE PLAY 8 MORE

100 108 116

PLAY 8 MORE PLAY 7 MORE (BACK TO #52 CALYPSO)

124

132 140

8 8 FILL

152

Ad-lib on shell and toms (4) PLAY 4 MORE

mp