

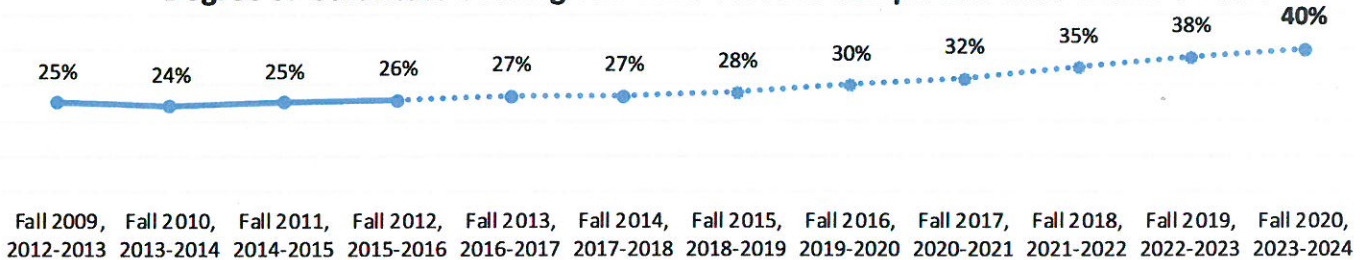
# COMPLETION



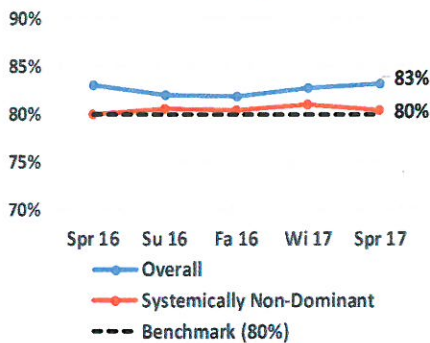
AUGUST 2017

*Clark College, in service to the community, guides individuals to achieve their educational and professional goals – including certificate and degree completion – by accomplishing its core theme objectives of academic excellence, social equity,*

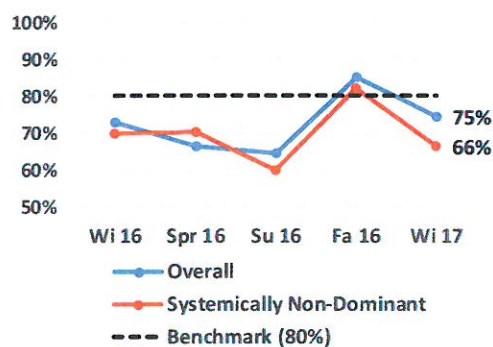
## Degree or Certificate-Seeking Full-Time Student Completion Rate Within 3 Years



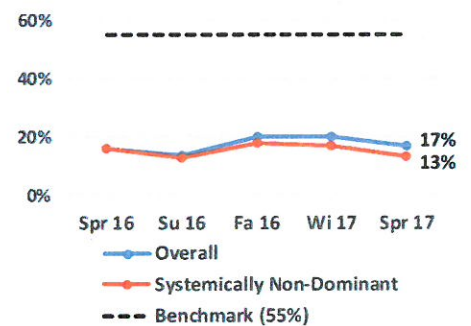
### Course Success Rate: Certificate or Degree-Seeking Students



### First-to-Second Quarter Retention: Certificate or Degree-Seeking Students



### Transfer-Intent Students Completing College-Level Math Within First 4 Quarters



## Monthly Highlights

- ◇ Credential Evaluations surpassed their annual goal of 200 credits of Credit for Prior Learning (CPL) with 311 credits accounted for in 2016-2017 academic year.
- ◇ Penguin Welcome Days was redesigned for students entering Fall 2017. The redesign includes a session that focuses on areas of study of students' intended or possible career pathway(s). The sessions are facilitated by a combination of student services staff and faculty who provide an interactive overview of the programs Clark offers. The redesign was based on student feedback and national best practices in orientations. (New students who had attended Penguin Welcome Days in 2016-2017 were significantly more likely to be retained.)